

EUREKA

The Nail-in Anchor



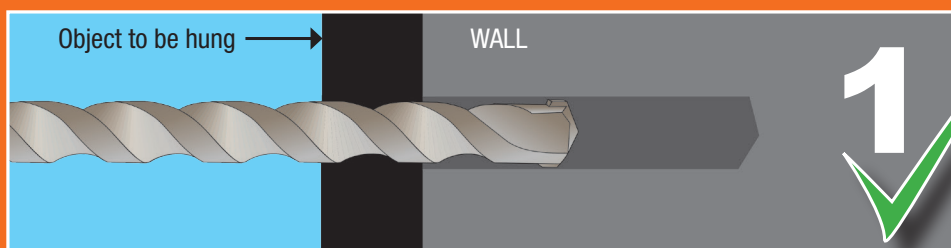
- Quick & Easy Installation
- Ideal for Kitchen cupboards
- Suspends medium to heavy articles firmly against solid walls
- Easy to remove if installed correctly



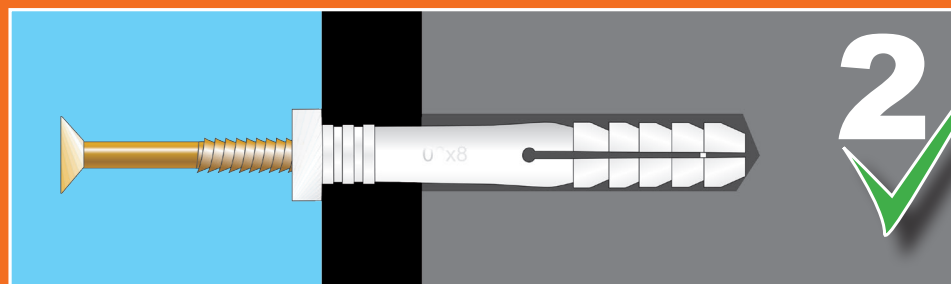
Doing It Right!

Unlike a plug and screw type anchor, the nail-in anchor is a one-step product that is supplied and used as a single unit.

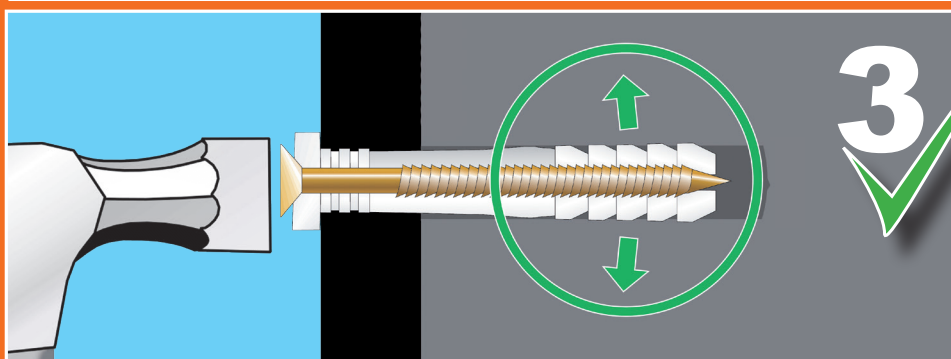
For a reliable and safe installation, follow these simple instructions:



Drill ONE size hole through object and into wall

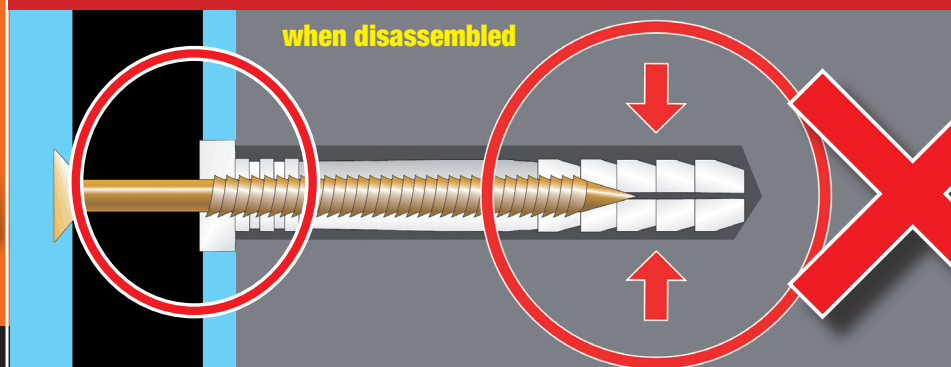


Insert Anchor as a unit - do NOT disassemble



Hammer nail in: sleeve expands in hole and anchors

DANGEROUS INSTALLATION



- Incorrect anchor application
- Sleeve does not expand
- Will pull out of wall
- Object will fall off

visit www.eureka.co.za
or call 011 471 0800
for more information